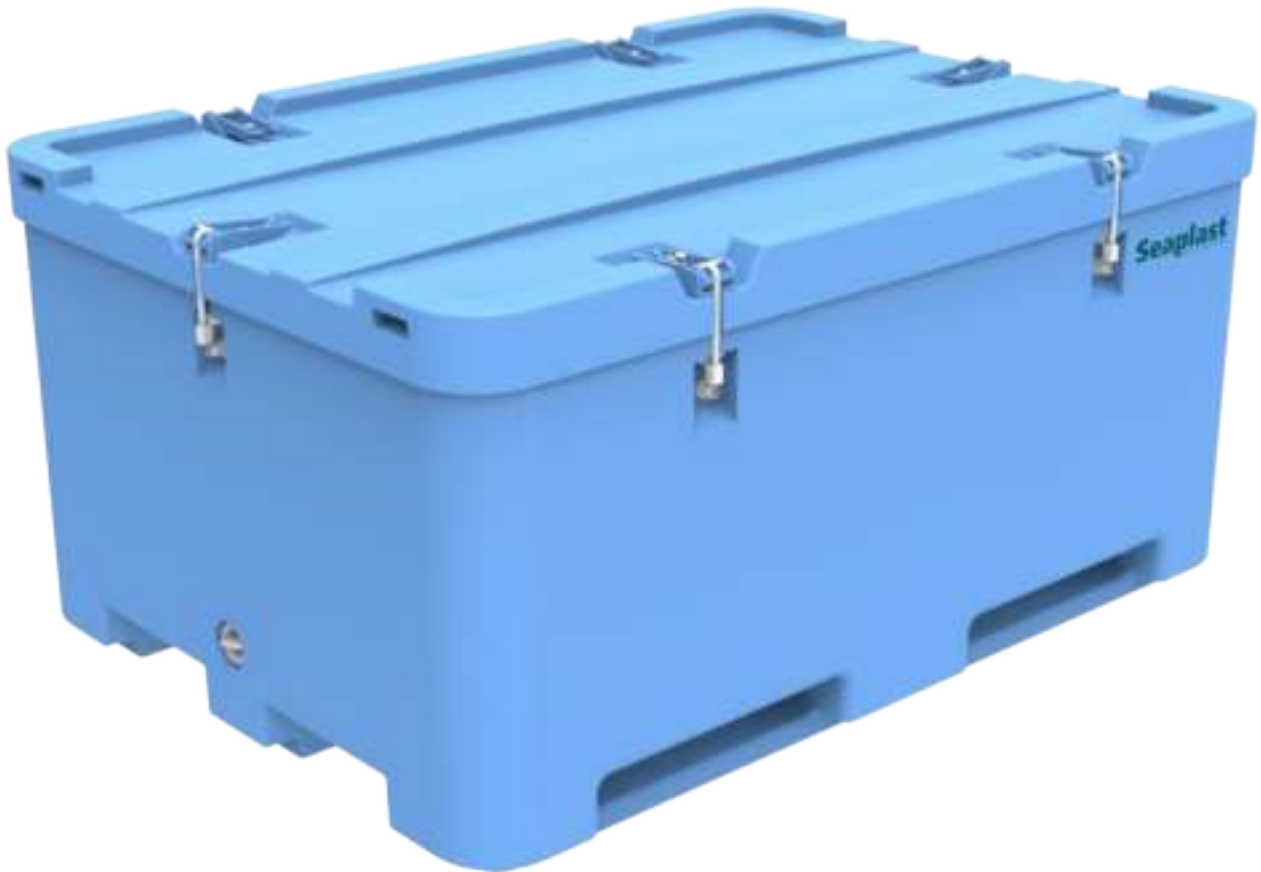




ISO 9001-2015
Certified Company

Seaplast®
BUILT TO LAST

SI-D1000P1



EU/FDA APPROVED*



YOUR PRODUCT DESERVES THE BEST

Seaplast® a global leader and manufacture of rotomoulded products present to you double walled insulated containers used in various applications such as supply chain, storage, processing plants, cold room, retail distribution etc. to name a few. The products are designed in-house and manufactured in food grade raw material to maintain the quality, durability, value for money and longer life for the products stored inside. Our products give you peace of mind for longer duration and help in grow your business with our unmatched quality.

- 100% Food Grade Raw Material
- Top Quality PE Skin and PUR Insulation Quality
- Longer Life (Durability) with high impact strength and crack resistant
- Zero Bacterial Growth design, construction and non-porous body

SI-D1000P1



Applications

SI-D1000P1 tub also famously called as Tuna tubs was design for Japanese customers. After some period it became popular in other Asian market specially to keep expensive and valuable Tuna fish (yellow Fin) in straight row (1.6 M) without any damage to the fish and preserve the freshness of the fish. It is also used in soaking, storage, chemical treatment and transportation of seafood.

Salient Features

- Unique in-house design and construction for durability
- Use of certified Fit For Food (3F) Raw Material and virgin
- Raw material with the highest quality check, purity and UV stability
- Insulation properties (K-Value) highest to give longest cold & hot duration
- High impact and crack resistant product
- High quality accessories with zero corrosion
- Options of some products with drain and without drain facility*
- Designed for easy handling - manually, in transit and in process
- Easy cleaning and bacteria free
- Possibility for engraving, in mould & post mould label, screen printing and branding
- Easy tracking and accountability of each box with identification marking
- Packed in corrugate sheet and stretch wrapped
- Different colour combination possible*

Dimension Details

| Model | External Dimension (mm) | | | Internal Dimension(Top)(mm) | | | Internal Dimension(Bottom)(mm) | | | Volume |
|------------|-------------------------|------|-----|-----------------------------|------|-----|--------------------------------|------|-----|--------|
| | L | W | H | L | W | H | L | W | H | Liters |
| SI-D1000P1 | 1700 | 1220 | 850 | 1580 | 1100 | 585 | 1550 | 1070 | 585 | 1000 |

Colors Available*: ● ● ● ● ● ● ● ● ● ●

Dealer/Distributor

Seaplast (India) Pvt. Ltd.

Reg. Office: B-212, Ratnaakar Nine Square, Opp. Keshavbaug Party Plot, Mansi Road Vastrapur, Ahmedabad - 380 015, Gujarat, India. CIN No : U25201GJ1996PTC031114
Tel: +91 79 4007 3880, Email: sales@seaplastindia.com, Website: www.seaplastindia.com

Factory Address: Survey No: 1658, B/H Gayatri Temple, Gandhinagar - Mansa Road Mansa, Gujarat, India, 382 845. Tel No : +91 2763 272 873 / 271 158

North India Depot: Block A-134 & 135, Sena Nagar, Dhulkot, Ambala City - 134 003 Haryana, India. Tel: +91 72 9415 5120, Email: ambala.depot@seaplastindia.com



Toll Free: 1800 123 55 8585



Strong Locking



Drainage Facility



Application